

craftscotland is the world's first audience development agency for craft. We represent and promote almost 1,700 small craft businesses across Scotland. Our aim is to develop the sector, develop the audience and to strengthen the position of Scottish craft.

Staff

Emma Walker,
Chief Executive
Jo Scott,
Business Administrator
Laura Anderson,
Online Marketing Manager
Rebecca Davis, Audience
Development Officer
Rachel McCrum, PhD studentship,
University of St Andrews
Julie Kelly, Project Manager

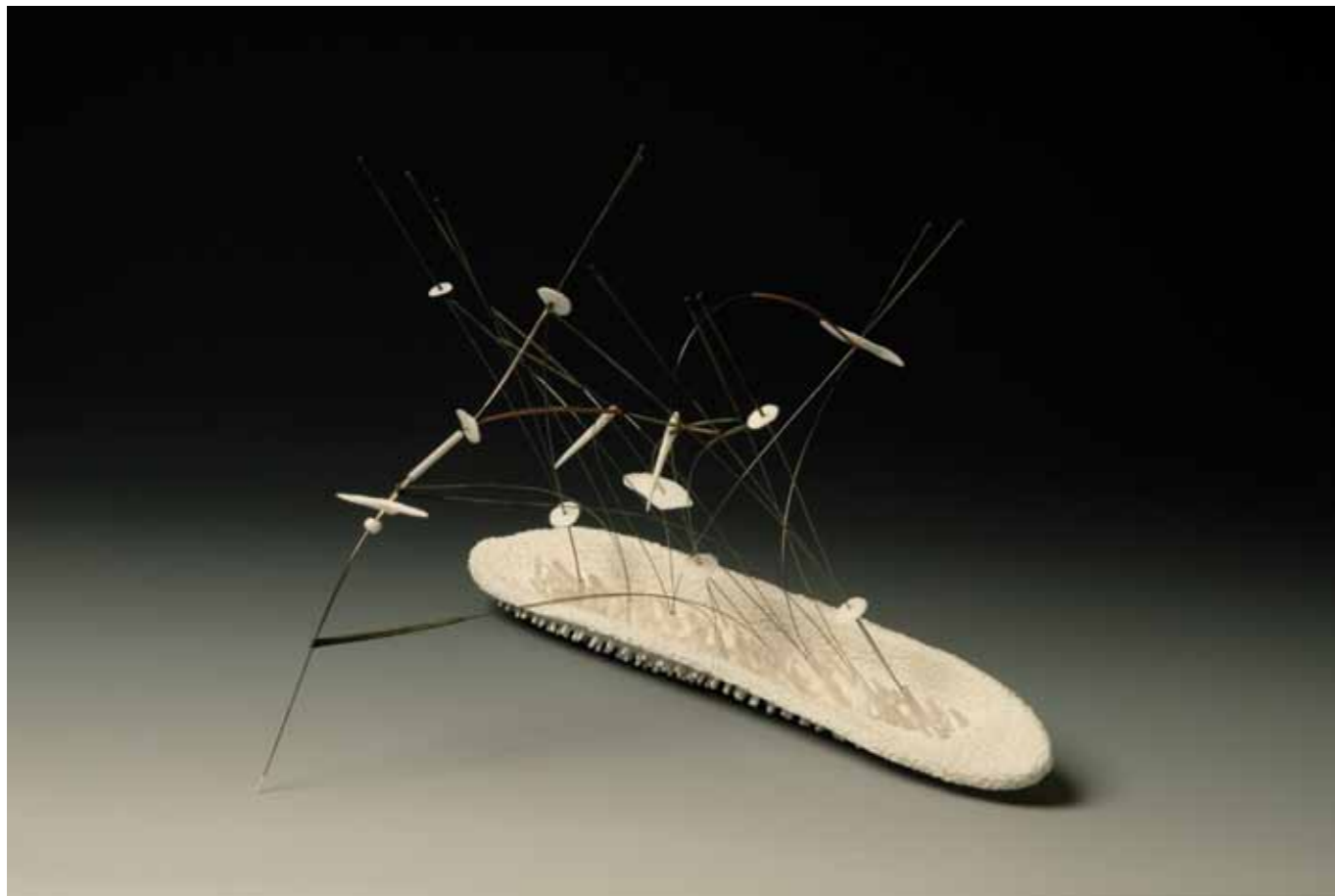
Contact

15 Coburg Street
Edinburgh
EH6 6ET Scotland

T+44 (0)131 466 3870
enquiries@craftscotland.org
www.craftscotland.org

Artists represented

Kirsty Eaglesfield, silversmithing
John Galvin, furniture
Chloe Harrison, mixed media
Daniel Kavanagh, mixed media
Katie Lees, jewellery
Geoffrey Mann, mixed media
Grainne Morton, jewellery
Amanda Simmons, glass
Craig Stuart, jewellery
Misun Won, jewellery
Rebecca Wilson, ceramic
Annie Woodford, ceramic



Geoffrey Mann

Shine, Natural Occurrence series, 2005–10
H 22 x W 22 x D 17 cm
Bronze cast, silver plated
Photo: Nick Moss

Mann is a Scottish artist and designer whose fascination with transposing the intangible nature of time and motion has created a studio practice that challenges the divides between art, craft and design. This methodology is represented in his 2005–10 piece titled Shine, an investigation into the reflective properties of a metallic object; in this case the subject was a Victorian candelabra. Each shard represents the intensity of the reflection. The piece renders the impossible, encapsulating the beauty that exists above and apart from the material world.

Annie Woodford

Splinter, 2009
H 30 x W 30 x D 24 cm
Porcelain, copper, stainless steel
Photo: Jerry Mason

Woodford is captivated by our mysterious, infinite universe, observed both at macroscopic and microscopic levels and mankind's evolving place within that universe. Shifting boundaries between science and metaphysics and an enduring interest in parallel universe theory have instilled the pieces with a heightened intensity, while an obsession with hidden worlds has prompted her investigations into microscopy and the nano- universe, making the unseen seen. The work has qualities that reflect the intricacies of the natural world, elements that highlight its beauty and transience. Fragile, frangible, complex and esoteric, delicately balanced between risk and control, her pieces oscillate between absence and presence, hovering silently in a place between.